

0392024041

PCE Electric cooling pump



For reliable and efficient support of different thermal circuits: The Bosch coolant pumps PAD and PCE are designed with decades of experience in thermal, liquid and energy circuits.

Due to their robustness and design optimized for volume flow, they have proven themselves millions of times worldwide in 24V and 12V applications. This includes, for example, applications in heating and cooling applications of electronics or battery cells in electric vehicles.

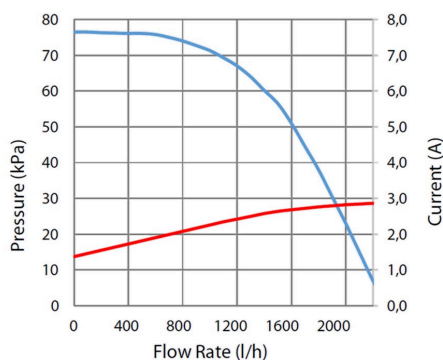
- **Degree of protection:** IPX7
- **Operating mode:** S1
- **Nominal Voltage:** 24 V

[Contact us!](#)



Product Specification

Technical data and performance curve



Flow rate (l/h): 1200

Nominal pressure (bar): 0,6

Nominal Voltage (V): 24

Weight (kg): 0,665

Control: PWM

Medium: Water/Glycol (50/50)

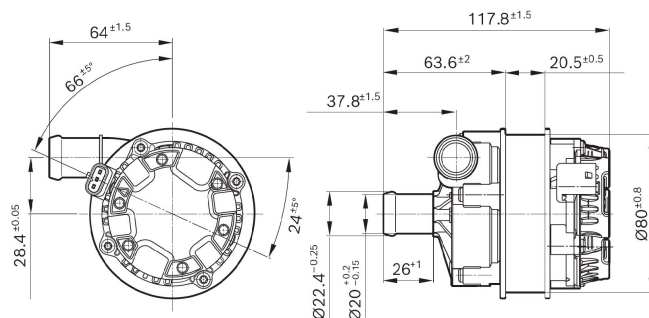
Degree of protection: IPX7

Product images and pictures are for demonstration purposes only, the actual product may differ from the picture shown. The quotation drawing is binding.

Robert Bosch GmbH, Auf der Breit 4, 76227 Karlsruhe, Germany www.bosch-ibusiness.com



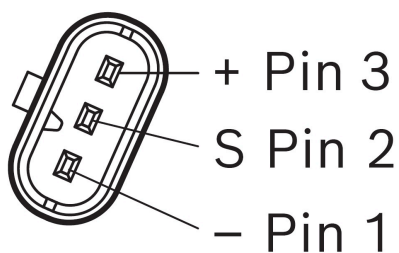
Dimensions



Please contact us if you need a 3d model

[Contact](#)

Connector



Housing:

- TE Connectivity MCON 1.2 1488991-6 (with CPA),...-2 w/o CPA
- Molex MXP120 34900-3102

Terminal:

- Bosch 1 928 498 811
- Tyco / Molex MCON 1.2 1670146-3 – Ag plated (20awg)
- KOSTAL MLK 1.2 [32124734130]

Seal:

- Bosch 1 928 300 936
- TE Connectivity 967067-1 (20 awg)
- KOSTAL 10800507250

Features and Benefits

- Integrated electronics with failure diagnosis signal: For an increased efficiency of the brushless pumps and a control of the volume flow via PWM signal
- Extremely robust design: For a high power density, long service life and a motor attachment possible depending on the model
- Proven construction in line with the original automotive quality guidelines: For a low noise development and a high temperature range of up to 130°C
- Operating mode S1: Suitable for continuous operation

Product images and pictures are for demonstration purposes only, the actual product may differ from the picture shown. The quotation drawing is binding.

Robert Bosch GmbH, Auf der Breit 4, 76227 Karlsruhe, Germany www.bosch-ibusiness.com



Downloads

You may also be interested in:

To Product family: [Catalogue](#)

