

0392024058

PCE Electric cooling pump



The Bosch coolant pump PCE is an electronically commutated 12V centrifugal pump that can be used for a wide range of applications. With the integrated electronics with fault diagnosis function and the regulation of the flow rate via PWM signal, even higher efficiency is ensured.

In addition, the design is particularly robust, which leads to a long service life. Depending on the model, engine mounting is also possible. This ensures efficient cooling even off-road in snowmobiles, jet skis or forestry machines.

The product is being discontinued. Available until 01.11.2025.

New generation: [0393202453F](#) .

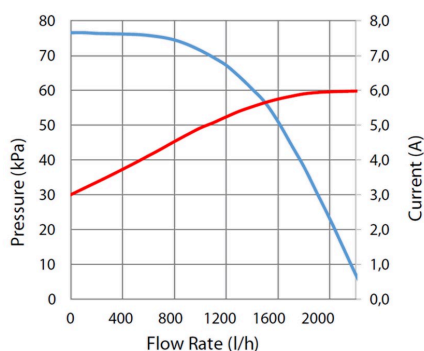


- **Degree of protection:** IPX7
- **Operating mode:** S1
- **Nominal Voltage:** 12 V

[Contact us!](#)

Product Specification

Technical data and performance curve



Flow rate (l/h): 1200

Nominal pressure (bar): 0,6

Nominal Voltage (V): 12

Weight (kg): 0,65

Control: PWM

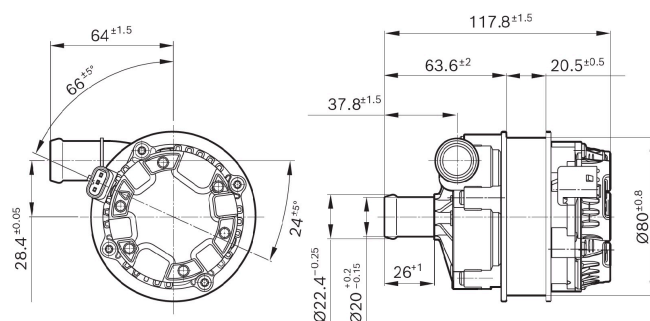
Medium: Water/Glycol (50/50)

Product images and pictures are for demonstration purposes only, the actual product may differ from the picture shown. The quotation drawing is binding.

Robert Bosch GmbH, Auf der Breit 4, 76227 Karlsruhe, Germany www.bosch-ibusiness.com



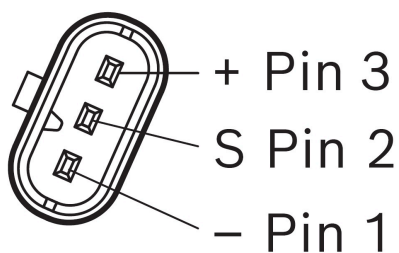
Dimensions



Please contact us if you need a 3d model

[Contact](#)

Connector



Housing:

- TE Connectivity MCON 1.2 1488991-6 (with CPA),...-2 w/o CPA
- Molex MXP120 34900-3102

Terminal:

- Bosch 1 928 498 811
- Tyco / Molex MCON 1.2 1670146-3 – Ag plated (20awg)
- KOSTAL MLK 1.2 [32124734130]

Seal:

- Bosch 1 928 300 936
- TE Connectivity 967067-1 (20 awg)
- KOSTAL 10800507250

Application examples

- Agricultural and forestry machinery
- Cabin heating
- Snowmobiles, jet skis, and motorcycles



Downloads

You may also be interested in:

To Product family: [Catalogue](#)

