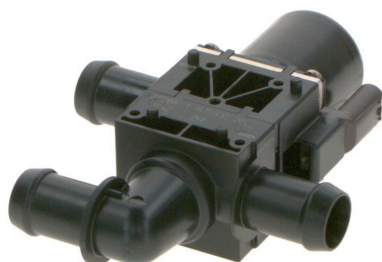


1147412204

Switch-over valve



Bosch offers a modular portfolio of coolant switching valves with a wide variety of variants and functions for different requirements.

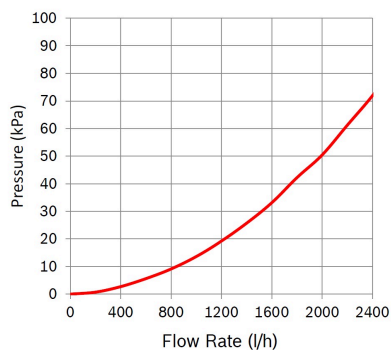
The changeover valve SNR 1147412204 is suitable for commercial vehicles and off-highway applications such as tractors or construction machinery with an on-board voltage system of 24 volts. It can be used for controlling the coolant flow in auxiliary cooling circuits of the powertrain or for the heating circuits of the passenger compartment.

[Contact us!](#)



Product Specification

Technical data and performance curve



Nominal Voltage (V): 24

Pressure drop (kPa): 45

Flow rate (l/h): 1500

Switchable Pressure difference (kPa): 160

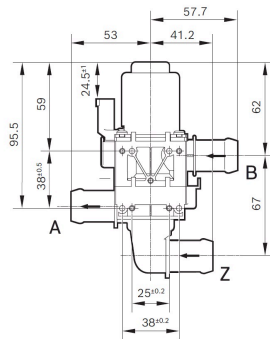
Resistance (Ω): 48

Product images and pictures are for demonstration purposes only, the actual product may differ from the picture shown. The quotation drawing is binding.

Robert Bosch GmbH, Auf der Breit 4, 76227 Karlsruhe, Germany www.bosch-ibusiness.com



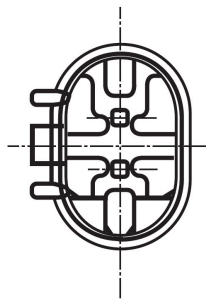
Dimensions



Please contact us if you need a 3D model

[Contact](#)

Connector



Housing:

1-967644-1

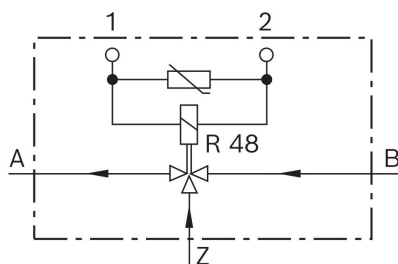
Contact:

5-965906-6

Single wire seal:

0-967067-1

Wiring diagram



Resistance (Ω)

48

Öffnungsrichtung

stromlos geöffnet von Z nach A



Downloads

You may also be interested in:

To Product family: [Catalogue](#)

