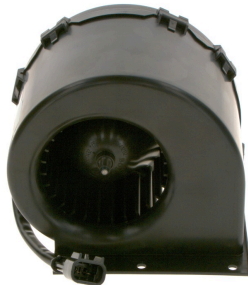


0130115604

GBM-S Compact Blower

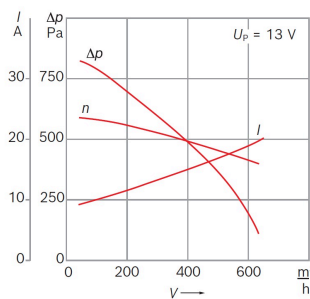


- **Degree of protection:** IP 13
- **Operating mode:** S1
- **Nominal Voltage:** 12 V

[Contact us!](#)


Product Specification

Technical data and performance curve



Nominal Voltage (V): 12

Nominal current (A): 14

Nominal speed (rpm): 4468

Air flow (m³/h): 400

Pressure difference (Pa): 470

Hall Sensor: No

Product images and pictures are for demonstration purposes only, the actual product may differ from the picture shown. The quotation drawing is binding.

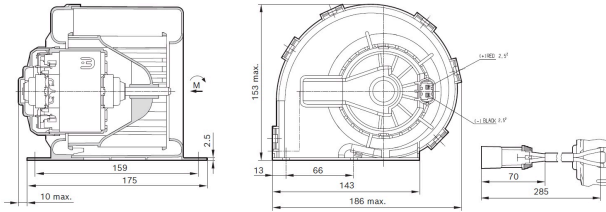
Robert Bosch GmbH, Auf der Breit 4, 76227 Karlsruhe, Germany www.bosch-ibusiness.com



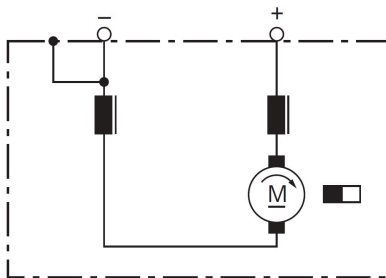
Dimensions

Please contact us if you need a 3d model

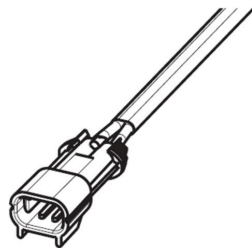
[Contact](#)



Circuit diagram



Connector



Black (-) Red (+)

Housing:

Lisi F513A

Locker:

-

Terminal:

TE 964308-1



Features and Benefits

- Decades of field experience and production in accordance with state-of-the-art automotive quality standards: For proven product quality and a long service life
- Available with or without PWM technology: To attend different customer requirements
- Depending on the model, protective functions such as automatic shutdown in case of obstruction, thermal fuse and reverse polarity protection: Ensure safe operation and high reliability
- Operating mode S1: Suitable for continuous operation

Downloads

You may also be interested in:

To Product family: [Catalogue](#)

