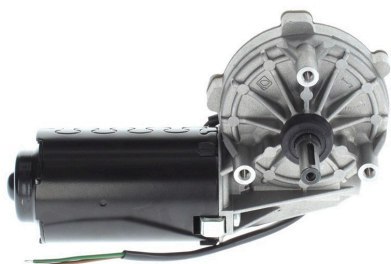


0986337201

# CDP Large Electric Motor with Transmission

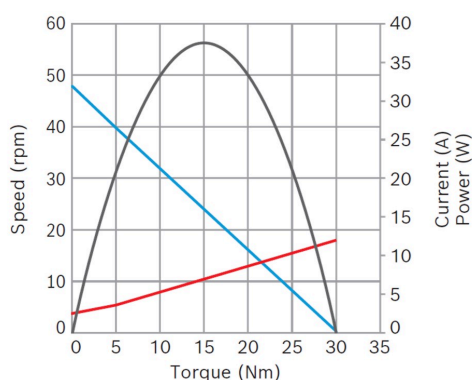


- **Degree of protection:** IP 50
- **Operating mode:** S1
- **Nominal voltage:** 24 V

[Contact us!](#)


## Product Specification

### Technical data and performance curve



**Nominal power (W):** 20,9

**Nominal current (A):** 3,5

**Nominal speed (rpm):** 40

**Nominal torque (Nm):** 5

**Stall torque (Nm):** 30

**Transmission ratio:** 108:2

**Hall Sensor:** No

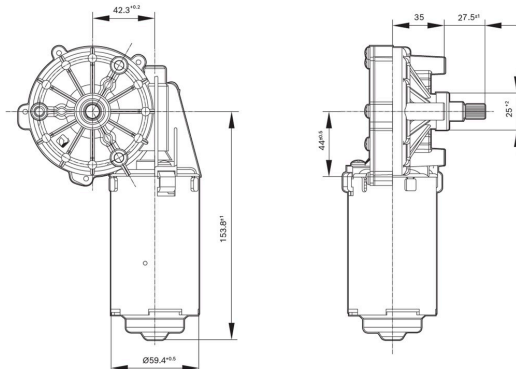
**Rotation direction:** Left and right rotation

Product images and pictures are for demonstration purposes only, the actual product may differ from the picture shown. The quotation drawing is binding.

**Robert Bosch GmbH**, Auf der Breit 4, 76227 Karlsruhe, Germany [www.bosch-ibusiness.com](http://www.bosch-ibusiness.com)



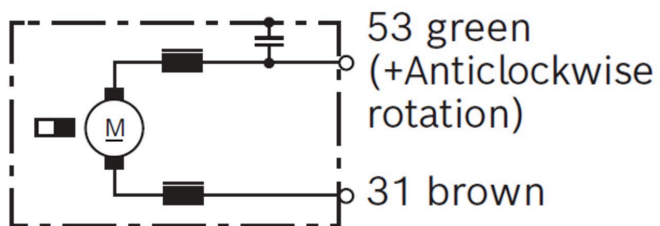
## Dimensions



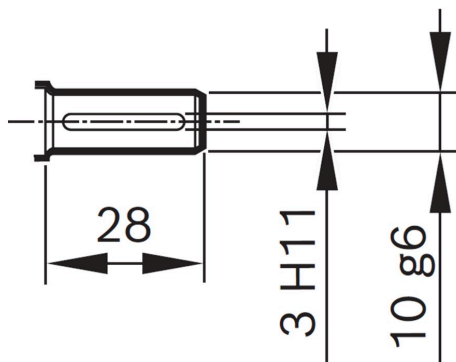
Please contact us if you need a 3d model

[Contact](#)

## Circuit diagram



## Drive interface



---

## Downloads

You may also be interested in:

To Product family: [Catalogue](#)

