

013002000L

PSM powerful brushless actuator



Introducing the BOSCH PSM electric motor, a versatile and adaptable power solution.

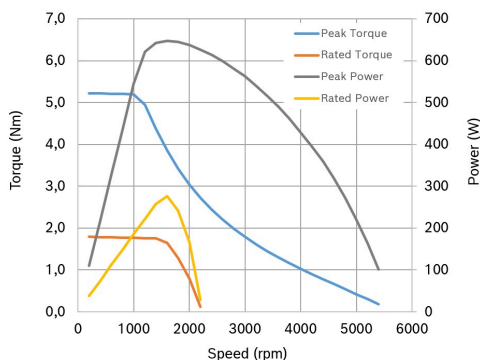
With its flexible interfaces for gear and ECU and the ability to operate on 12V or 48V, this drive can be tailored to meet specific customer needs. Boasting an impressive maximum torque of 5Nm, the BOSCH PSM electric motor delivers high power density, low cogging torque, and excellent acoustic behavior, making it an excellent choice for various applications. Whether it's column, pinion, or belt applications, the PSM supports reliable and high-performance operations across different voltage settings.

[Contact us!](#)



Product Specification

Technical data and performance curve



12V Performance curve

nominal/peak power (W): 185 / 545

nominal/peak current (A): 28 / 80

nominal/peak speed (rpm): 1000 / 1000

nominal/peak torque (Nm): 1,8 / 5,2

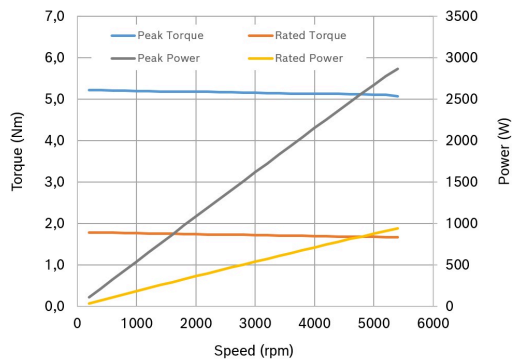
hall sensor: optional, carried out by customer

Product images and pictures are for demonstration purposes only, the actual product may differ from the picture shown. The quotation drawing is binding.

Robert Bosch GmbH, Auf der Breit 4, 76227 Karlsruhe, Germany www.bosch-ibusiness.com



Technical data and performance curve



48V Performance curve

nominal/peak power (W): 185 / 545

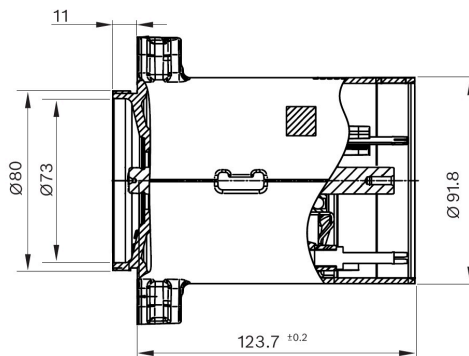
nominal/peak current (A): 28 / 80

nominal/peak speed (rpm): 1000 / 1000

nominal/peak torque (Nm): 1,8 / 5,2

hall sensor: optional, carried out by customer

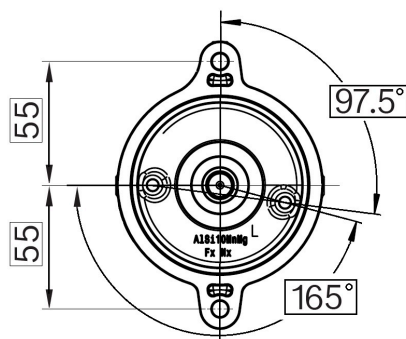
Dimensions



Please contact us if you need a 3d model

[Contact](#)

Dimensions

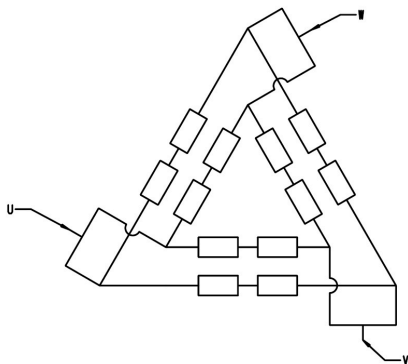


Please contact us if you need a 3d model

[Contact](#)

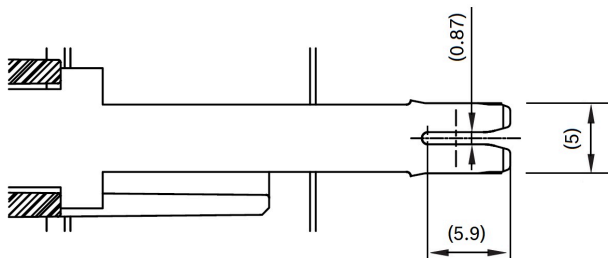


Circuit diagram



Please find the appropriate sensor magnet for the motor shaft under the "Accessories" tab

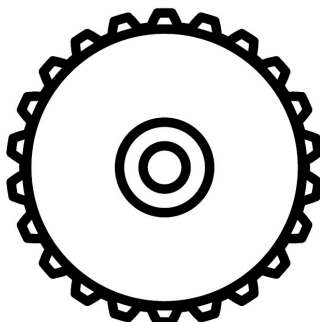
Connector



3 IDC contacts for phases U, V, W

- **orientation : 120°**
- **reference circle diameter of contacts :**
69,0 mm

Drive interface

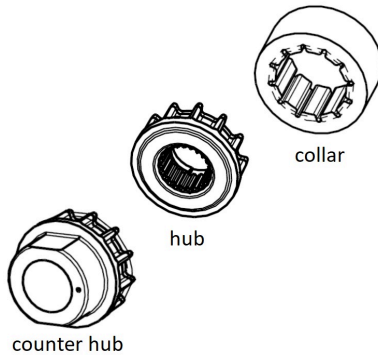


Toothing similar to DIN 5480

- **number of teeth : 22**
- **modulus : 0.5**
- **engagement angle : 30°**
- **reference diameter : 11,00 mm**



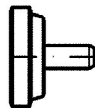
Accessories



- **colar** : 7802040822-0RS
- **hub** : 7802040825-0RS
- **counter hub** : 7802040967-0RS

Accessories

- **sensor magnet** : 7802340357-K0Z



Sensor Magnet

Application examples

- Shift/select function in the transmission or conveyor belt
- Actuating clutches or gear shift units in conventional and electrified transmissions for different hybrid topologies and voltage levels
- Electrohydraulic applications
- Automated coupling and uncoupling of clutches and connections that would otherwise have to be released manually
- Lifting and lowering function or loading facilities

