

0132801143

VMC Electric Actuator



Decades of experience in the manufacture of electric motors have led to the current design of the compact VMC actuators, which have proven themselves millions of times on the road.

The Bosch VMC actuator 0132801143 offers high performance with low noise and a small installation space. This makes it the perfect choice for household appliances such as extractor hoods, steam cooking and baking systems, as well as electronic bathroom fittings with digital mixing valves.

Below you will find a selection of suitable actuating levers.

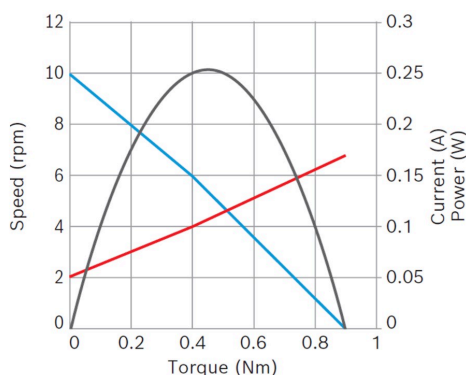


- **Operating mode:** S2
- **Rotation direction:** Left and right rotation
- **Nominal voltage:** 24 V

[Contact us!](#)

Product Specification

Technical data and performance curve



Nominal power (W): 0,3

Nominal current (A): 0,10

Nominal speed (rpm): 6

Nominal torque (Nm): 0,4

Stall torque (Nm): 0,9

Transmission ratio: 405:1

Degree of protection: IP 40

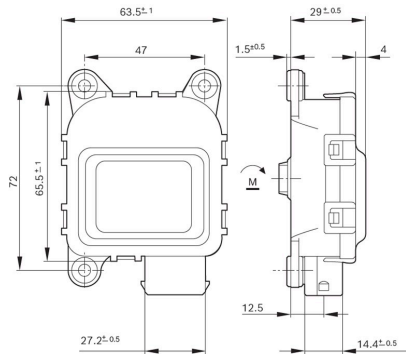
Signal potentiometer: No

Product images and pictures are for demonstration purposes only, the actual product may differ from the picture shown. The quotation drawing is binding.

Robert Bosch GmbH, Auf der Breit 4, 76227 Karlsruhe, Germany www.bosch-ibusiness.com



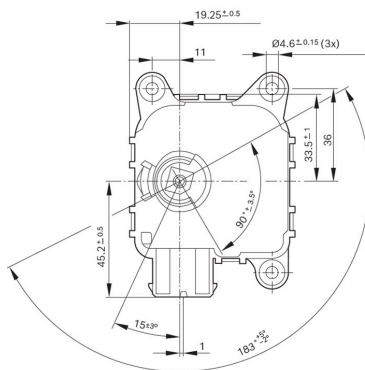
Dimensions



Please contact us if you need a 3d model

[Contact](#)

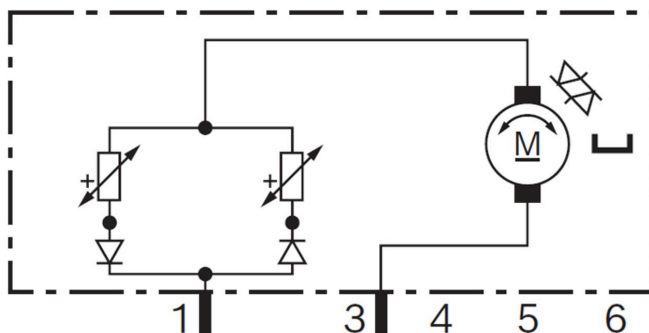
Dimensions



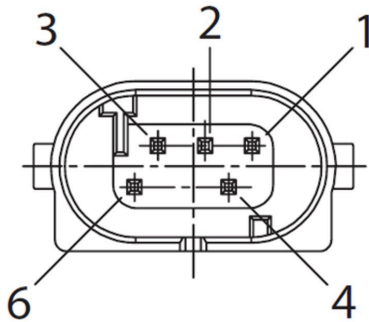
Please contact us if you need a 3d model

[Contact](#)

Circuit diagram



Connector



Housing:

RB-1 928 403 095

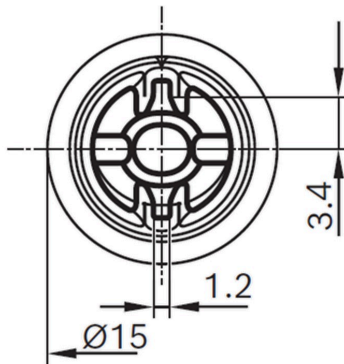
Locker:

-

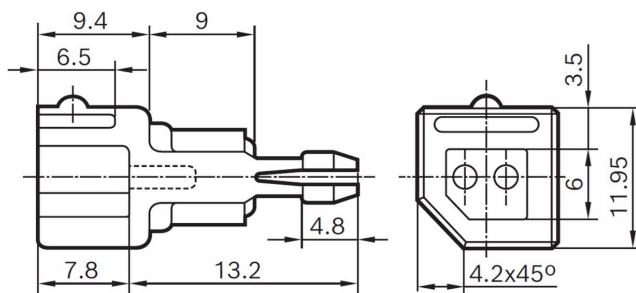
PIN:

928999-1

Drive interface



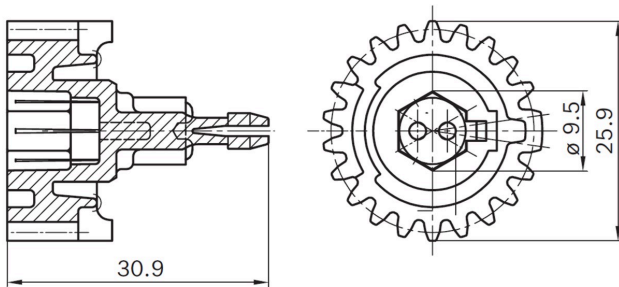
Accessories (Lever)



1 132 061 027

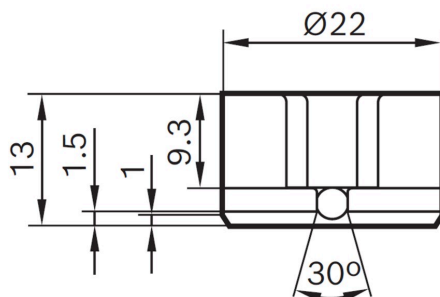


Accessories (Lever)



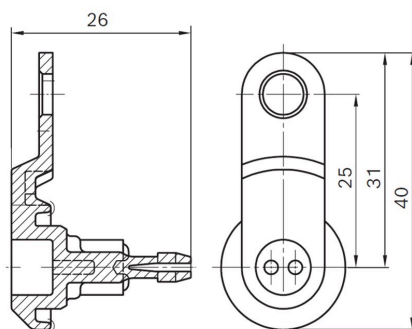
1 132 061 028

Accessories (Lever)



1 132 061 074

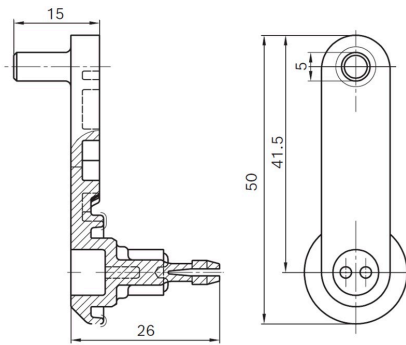
Accessories (Lever)



1 132 061 016

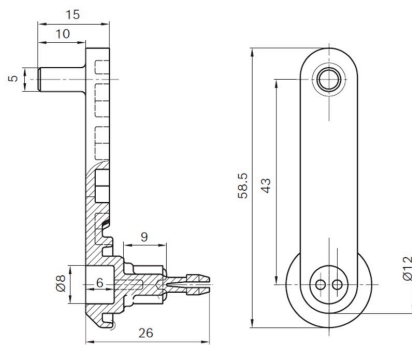


Accessories (Lever)



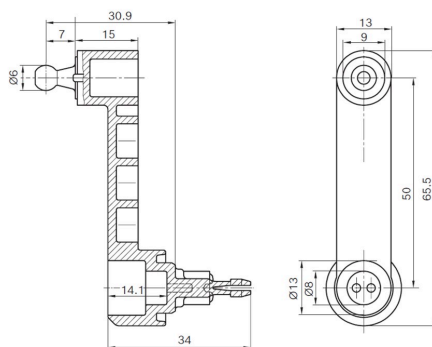
1 132 061 023

Accessories (Lever)



1 132 061 049

Accessories (Lever)



1 132 061 047



Application examples

Commercial applications such as supermarkets, office buildings and industrial cold rooms

- Mobile applications such as the cooling of trailers or containers
- Roof-mounted system for heating/cooling vehicle interiors
- Air damper actuator for blowers in tractors or agricultural sorting systems
- Flap actuator for electrical appliances

Downloads

You may also be interested in:

To Product family: [Catalogue](#)

