

0132801169

VMC Electric Actuator

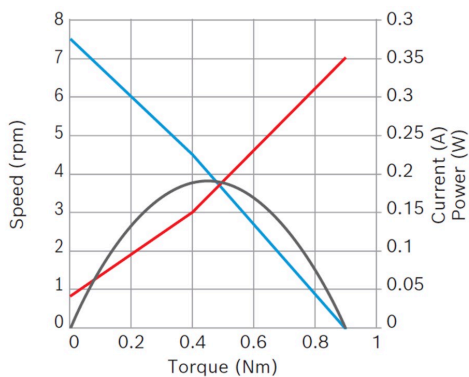


- **Operating mode:** S2
- **Rotation direction:** Left and right rotation
- **Nominal voltage:** 12 V

[Contact us!](#)


Product Specification

Technical data and performance curve



Nominal power (W): 0,2

Nominal current (A): 0,15

Nominal speed (rpm): 4,5

Nominal torque (Nm): 0,4

Stall torque (Nm): 0,9

Transmission ratio: 405:1

Degree of protection: IP 40

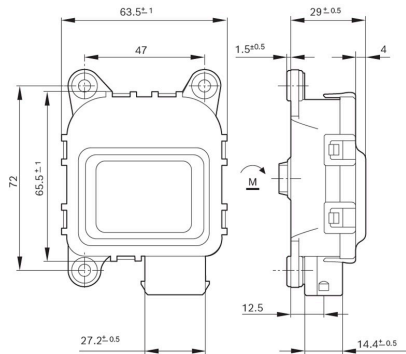
Signal potentiometer: Yes

Product images and pictures are for demonstration purposes only, the actual product may differ from the picture shown. The quotation drawing is binding.

Robert Bosch GmbH, Auf der Breit 4, 76227 Karlsruhe, Germany www.bosch-ibusiness.com



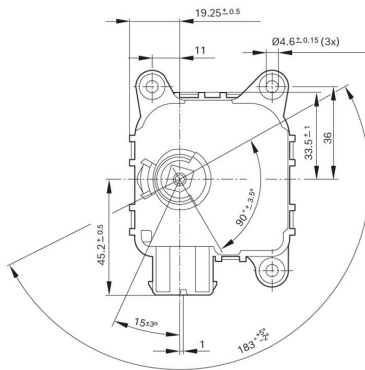
Dimensions



Please contact us if you need a 3d model

[Contact](#)

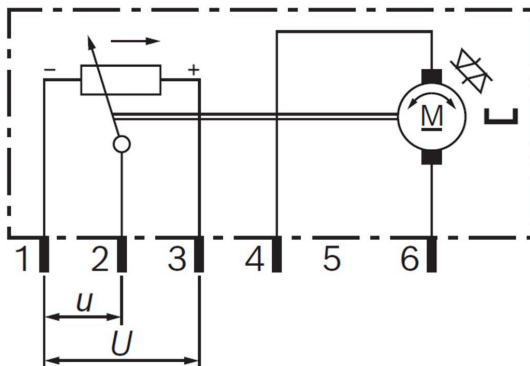
Dimensions



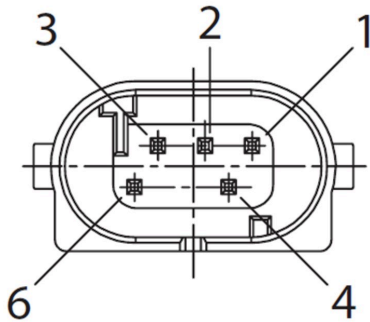
Please contact us if you need a 3d model

[Contact](#)

Circuit diagram



Connector



Housing:

RB-1 928 403 095

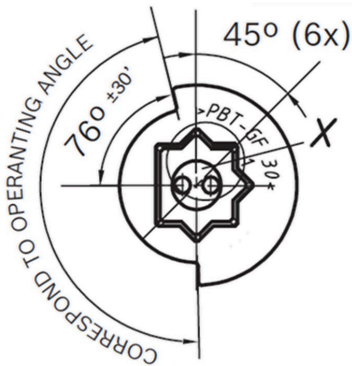
Locker:

-

PIN:

928999-1

Drive interface



Application examples

- in the automotive industry
- in off-highway vehicles, e.g. for retrofitting air conditioning units for light commercial vehicles and agricultural machinery
- in medical technology
- in ventilation systems of container ships
- in house ventilation systems and building technology
- Cooling systems for public transport
- in areas where precise adjustment and positioning is required



Downloads

You may also be interested in:

To Product family: [Catalogue](#)

